



*Amoretella*  
**LOOKBOOK**  
SPRING | SUMMER '25





L



# SS '25

Custom designs for the modern bride.

At Amorétalla, every piece of the Bridal collection, from cutting-edge couture gowns to figure-flattering jumpsuits and rompers, is hand stitched in an atelier in Salem, N.H., using the finest fabrics, laces, crystals and other finishes mindfully curated from around the globe.

AMORETALLA.COM



# ABOUT THE DESIGNER

Gabe Atallah, principal of Amoretalla Couture, began his career working for the prestigious Bridal House Priscilla of Boston, the couturier famous for working on the wedding gown of Princess Grace of Monaco and designing the gowns of three daughters of two U.S. Presidents. A graduate of the School of Fashion Design (Boston, MA), Mr. Atallah's design aesthetics use fit, form and function to create each legendary gown.

Mr. Atallah designs for the modern bride, seamlessly incorporating timeless opulence using hand-sewn Haute Couture techniques. His fabrics, laces, pearls and genuine Swarovski crystals, including precious stones, are curated from around the world.

Mr. Atallah has been sketching and designing since the age of eight. His inspiration for fashion comes from traveling the world and being immersed in the beauty of nature, art and architecture. Mr. Atallah was born in Beirut, Lebanon, once known as Paris of the Middle East, and is the proud father of three children.







# 01

## BELGIQUE



A mermaid style that features a corset-boning bodice. Embroidered, sheer styling with beaded crystal droplets, ostrich-feather bottom, and removable fitted sleeve.



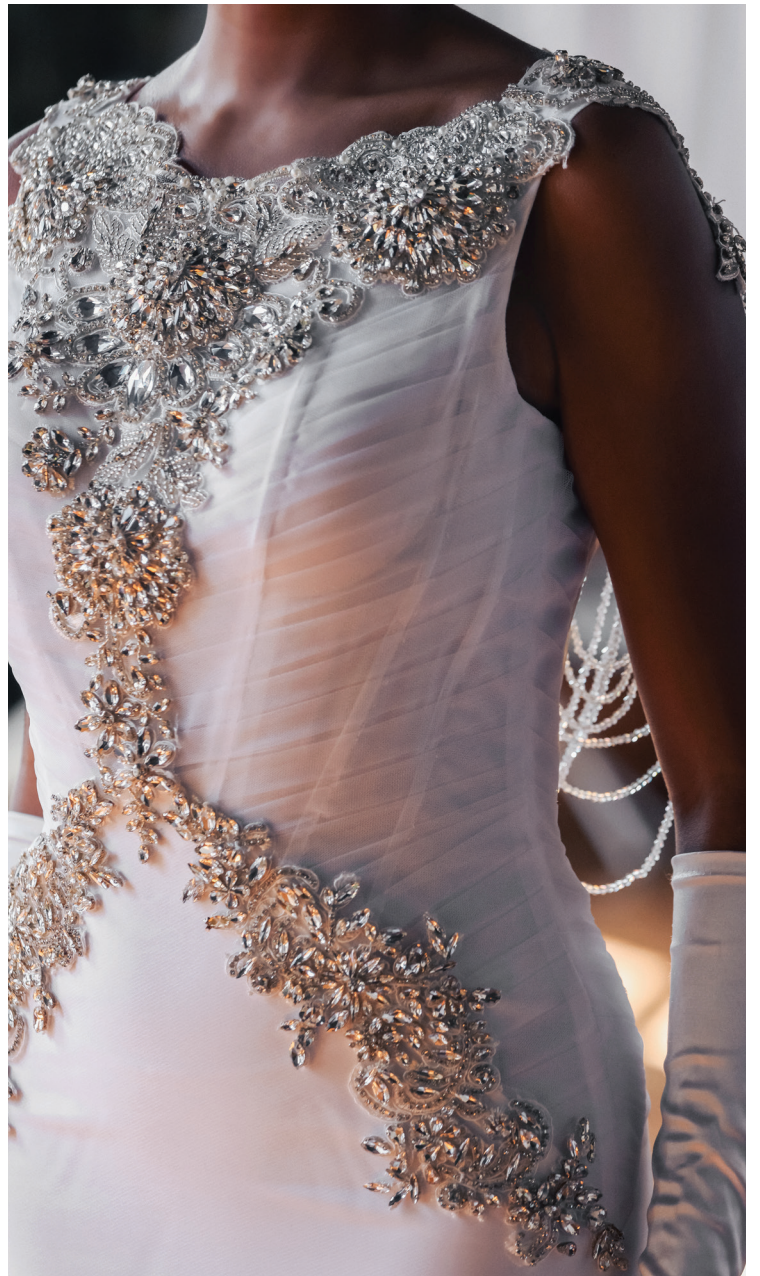


**DETACHED SLEEVE FOR ADDED STYLING OPTIONS.**



# 02

## ARIA



A mermaid silhouette gown adorned with organza and tulle. Shimmering stones and pronounced applique are set atop a roused bodice with crystal scalloped droplets over an open back.







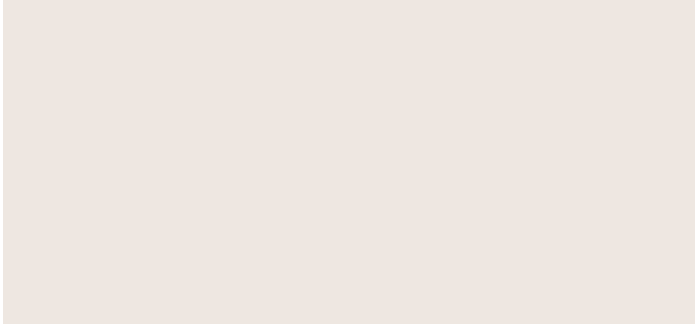
# 03

## BILLIE



Satin Jasmine floral applique on Chantilly lace with sparkle. Figure flattering A-line silhouette with detachable Satin faced organza and a cascading peplum train.







# 04

## BLOSSOM



This convertible strapless A-line silhouette is beaded with a cherry blossom floral lace. Features a removable halter top, taffeta train and fitted removable sleeves. Three looks in one.





**SHOWN ABOVE WITH REMOVABLE HALTER AND TRAIN ATTACHED.**



# 05

## BOWIE

A three-dimensional cascade floral lace applique Satin Organza ball gown, with Col Bateau neckline and detachable floral neck band.









# 06

## ADELE



A convertible style with a full silk chiffon detachable skirt adorned with ostrich feathers. Ruffled neckline and exposed boning at the waistline.





SHOWN ABOVE WITH OSTRICH LINED OVER SKIRT ATTACHED.



# 07

## BRADIE



A diagonal sequined pattern designed to compliment the woman's body. Mermaid styling with a plunging v-neckline.







# 08

## BROOKLYN



A Mikado halter-top style with figure-flattering mermaid shape. Features crossed crystal channels at neckline and a cathedral length train.











# 09

## BAILEY



A banded strapless Mikado dress style with plunging detail at center front. Features a center slit, back-channel mesh detailing and removable large bow.





# 10

## BRONTE

Satin D'Hauteur A-line strapless dress with back train and three-dimensional shimmering organza floral and leaves applique. Available with a removable multi layered circular sleeve and neck band.









# 11

## BRENNA



Corded floral lace on a boat neckline style dress. Features a one shoulder flower detail and a detachable cape.







# 12

## BLAKE



A strapless Mikado mermaid style. Three-dimensional floral appliques at bust line and train, with sheer corset back and contrasting boning channels.







# 13

## BRINKLEY

A three-dimensional satin floral sweetheart neckline with shimmering bodice and Mikado side slit skirt. Features a one shoulder removable drape with bow detailing.









# 14 BRIELLE



**Satin D'Hauteur pleated high-waist ball gown features a high side slit and pocket. Long sleeve styling with stand collar, lace top and pronounced satin 3-dimensional floral applique.**







# 15

## ANTOINETTE

Classic White Satin fit and flare gown with princess seamed styling. Flattering ceremonial dress with peaked bra cup detail and optional rhinestone pendant centered at the bust line.









# 16

## ANNA



**A classic A-line Satin D'Hauteur dress with tulle halter top, embroidery, pearl lace details and Swarovski crystal stones. Sheer Organdy cape is fully removable.**





**DETACHABLE CAPE FOR A MODERN ALTERNATIVE TO A TRAIN.**





**SHOWN ABOVE: OPTIONAL COLOR MATCHING  
CATHEDRAL-LENGTH FLORAL PETAL VEIL.**



# 17

## BELLA ROSE



White organdy layered with contrasting color, plunging sweetheart neckline with crystal applique, sarong-styled short dress with removable ceremonial over-skirt and removable circular pleated sleeve.

Color offerings: white, pale lavender, pale blue, pale pink and red. Additional colors available upon request.









# CONTACT

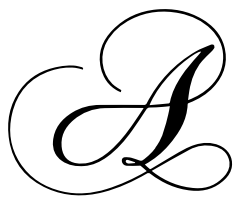
Contact us directly for all wholesale inquiries, custom design requests or to set up a consultation today.

Gabe Atallah, Principal Designer  
603.685.8478  
[g.atallah@amoretalla.com](mailto:g.atallah@amoretalla.com)

8 Stiles Road, Suite 104  
Salem, NH 03079

[AMORETALLA.COM](http://AMORETALLA.COM)





---

AMORÉTALLA

---

[amoretalla.com](http://amoretalla.com)